

Growing up in the Highlands

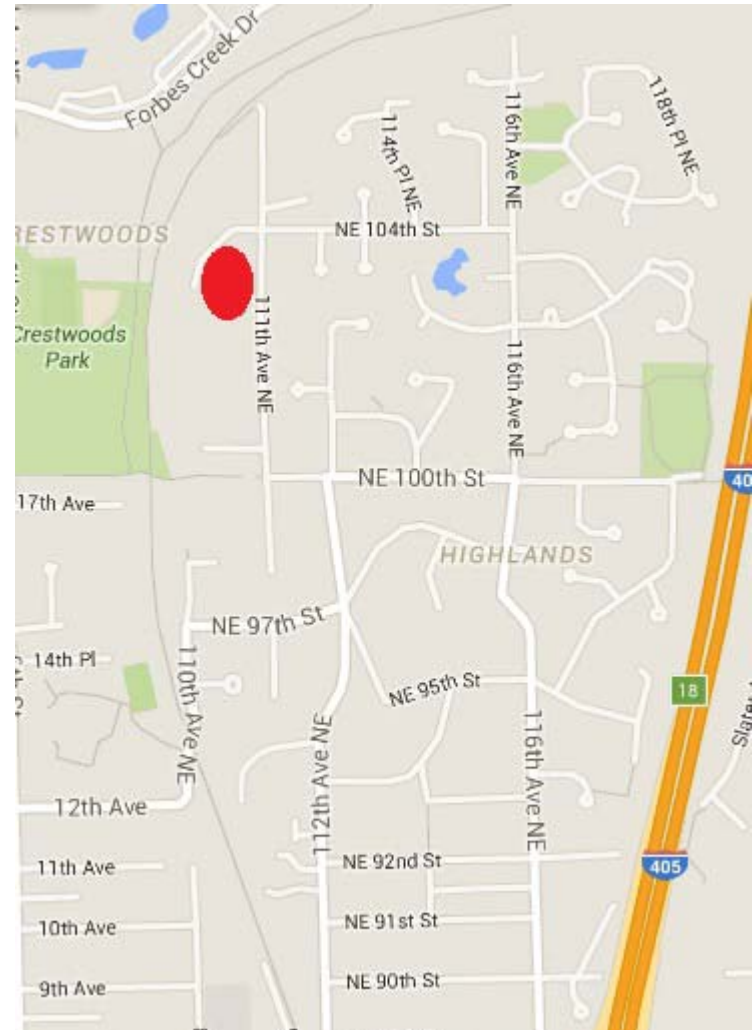
Roseanne Rychlik Hoxie



10033 111th Ave NE
Johnny and Ann Rychlik
Built 1920 (?)
Purchased 1951



111th Ave NE looking south, 1975, still gravel





McEvoy-Rogers Lumberyard and Johnnie's Mobil Station, corner of State Street and Kirkland Avenue, 1975.

Photo by Art Knutson

Johnny's Mobile Station Downtown Kirkland



Opening Day
1959

You could see Juanita
Lots of horses in the Highlands
Kids rode to Juanita and Bridle Trails



Babysitter, Mrs. Gussie Acker, wife of Will Acker,
who owned general store on 116th



The big snow
of '69

(Kids ice skated
on ponds in
Cotton Hill Park)





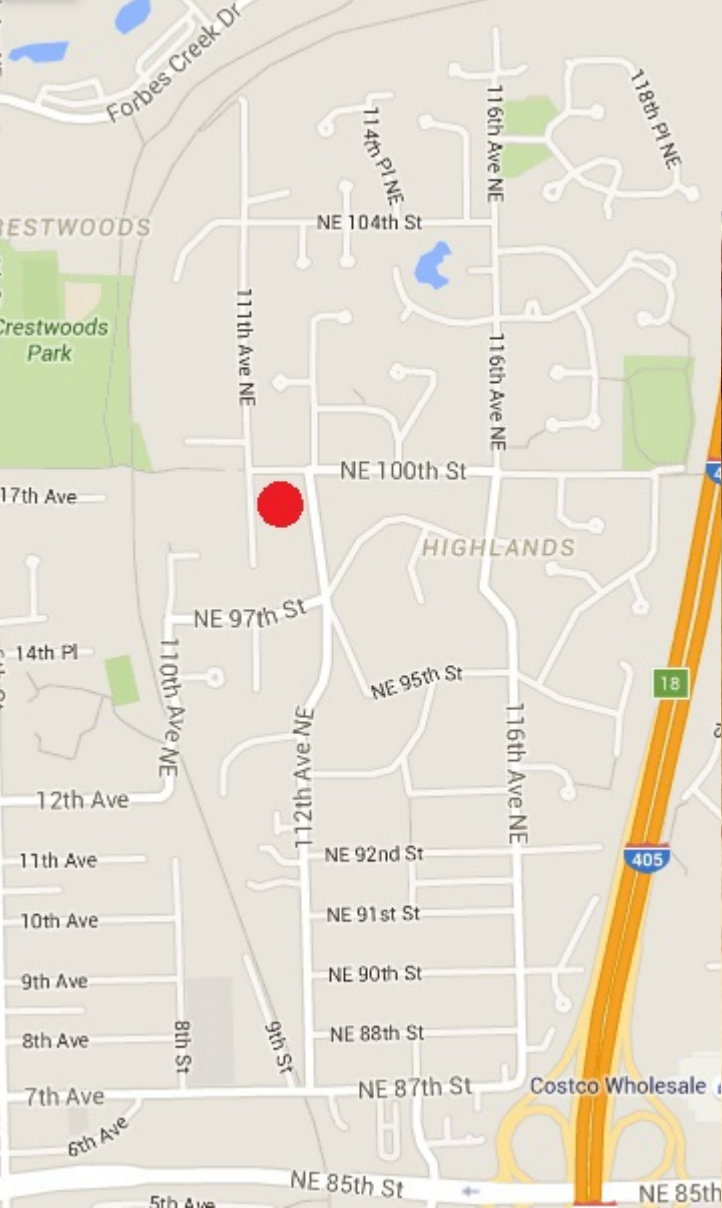
111th
looking
east



Westgate
house



Bozart's Orchard



SW corner of 112th Ave NE and NE 100th St.





Mom worked at Sears on Commercial (now Park Lane)



Everest Ball Field



Marina Park, 1971; the first pavilion



Crestwoods Park



Highlands Park

111th Ave NE looking south

NE 104th St.

Aerial photos from early 90s





Spirit of Washington Dinner Train ran behind Rychlik property
Stopped running in 2007
(Kids used to race the train with horses)