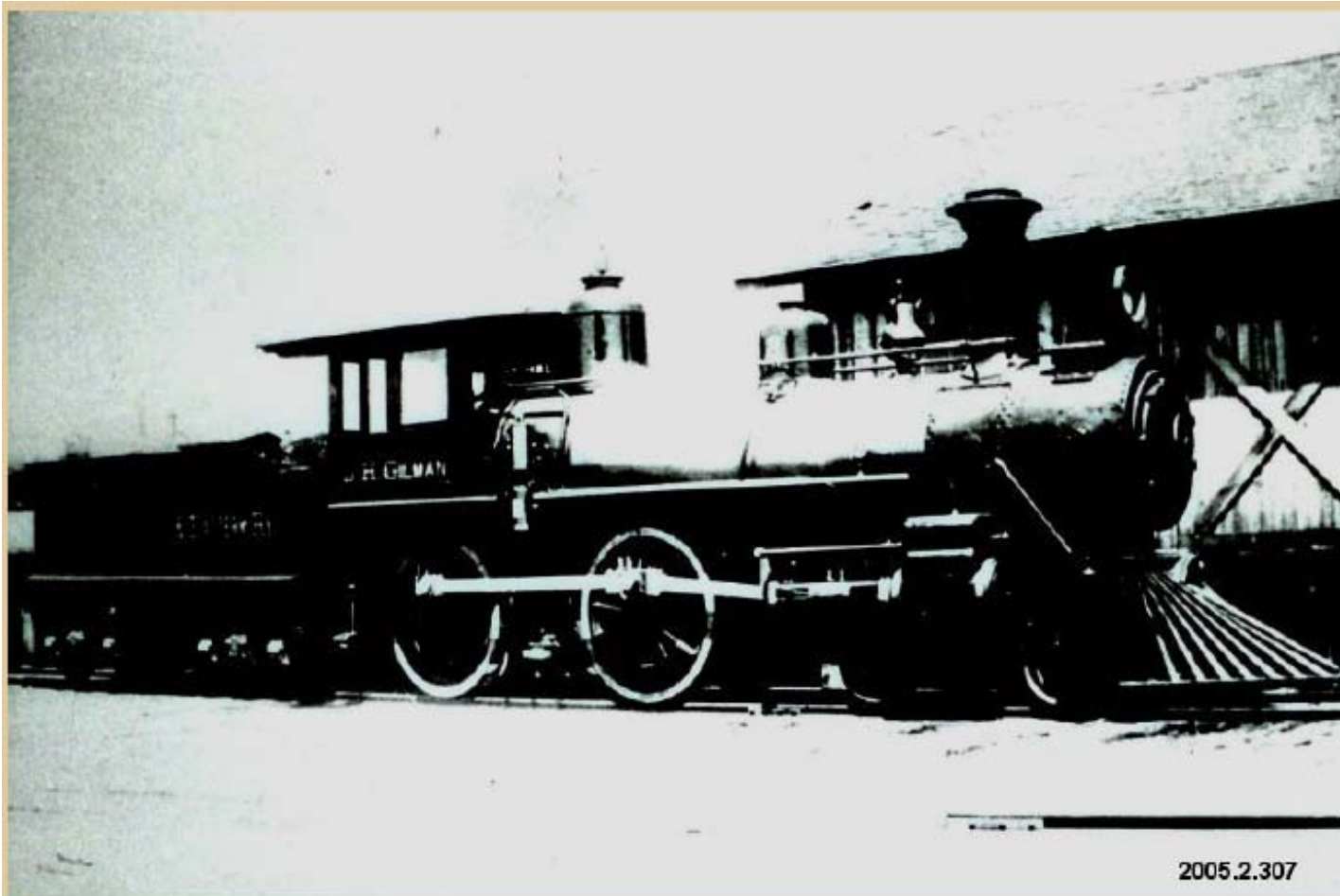


Highlands History Highlights

Sheffield Street (116th Ave NE) was a center of population in the early 1900s, with six houses (some still stand), two grocery stores, a butcher shop, and a railroad depot.



2005.2.307

The Seattle Lake Shore and Eastern Railroad pulled into the train depot on Sheffield Street (116th Avenue NE) and filled up with water at the steel works. After the mill failed, the old tracks were torn up and the depot dismantled. The wood was used to build two houses in the neighborhood.

This is not an actual photo of the Sheffield depot, but the train would have looked like this.

NE 87th St. (Piccadilly Street) circa 1910

Piccadilly was designed to be a direct conduit from the Lake to the foundry operations for the mill. It was even steeper than today. This photo was taken at about 112th Ave NE looking west.

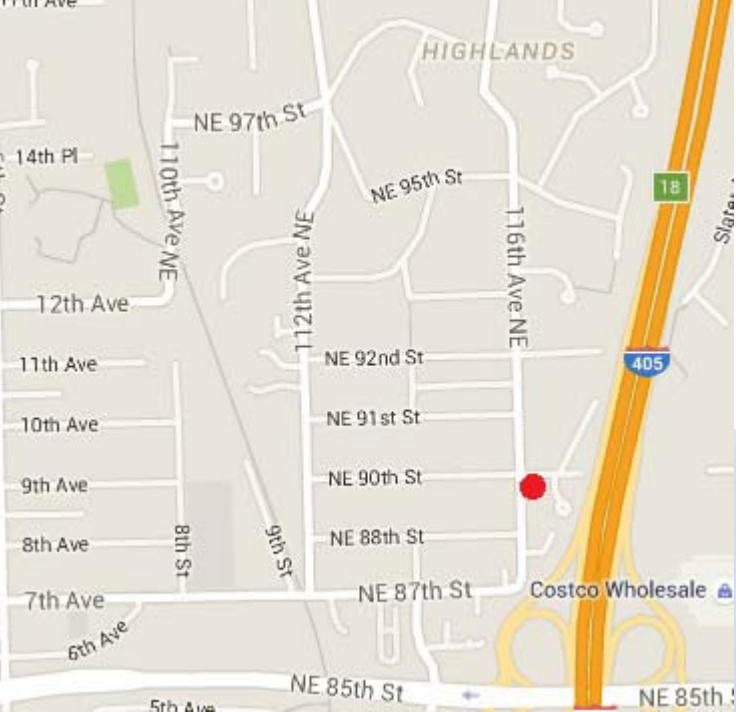


From the Collections of Eastside Heritage Center

Two Stores in Highlands

There were two stores at the intersection of Michigan (90th) and Sheffield (116th):

- William and Gussie Acker had a store in what is now the old Grange Hall. They also raised poultry and peddled eggs throughout the neighborhood. Their daughter Allene was regularly seen in the Highlands with her eggs. Their enterprise was in operation from the 1920s until 1940.
- Fred Lietha ran Lietha's Store with his father, John, and sister Emma. John came from Switzerland in 1889. Fred was born in Minnesota. The store was open from 1920 to 1950.



8820 116th Ave NE

Built 1900

Leitha's Store 1920-1950

Also called Rose Hill Grocery

Had telephone, gas, vinegar refills



Fred Leitha Is Locking Up Ancient Rose Hill "Jot 'Em Down" Store

Fred Leitha is locking up his Rose Hill Grocery after serving the community in good times and bad for 30 years.

He was talking about it Saturday morning in between customers. One of them wanted to know if the bacon he'd ordered a week ago had arrived.

"Not yet," Fred said. "Oughta be here, though sometime next week."

"Thought you were closing up," the customer said.

"We are, but I'll see to it ya get the bacon."

That's descriptive of the way Fred Leitha has treated his customers, most of them Rose Hill residents, for the past 30 years. Neighbors say he's a great guy. Some refer to him as a character.

"Go up and look at his place sometime," one of his prize clients said the other day. "It's the original 'Jot 'Em Down Store,' if you ever saw one!" It is.

Fred was working around his place Saturday morning when

Rose Hill Grocery Near End of Trail



★ **END OF GROCERY** Fred Leitha's Rose Hill Grocery was scheduled for closing last Saturday after 30 years of operation. Patrons were saddened by the store's closing because the place has been a convening point for the neighborhood. During the span Leitha has been assisted in the store

Redmond-K

One neigh
Fred's said
employee
time ago a
to get the
floor.

"Why?"

"Because
the depart

Fred sh

to his for

"Son, t

in the di

Citizen

kindly o

him clos

accomod

ers and

and dau

bad, lik

carry th

Johnny,

"I w

I was n

of the

Hoboes

the rail

— Open to All Physicians —



Fred and Emma Leitha's Store closes in 1950 after 30 years

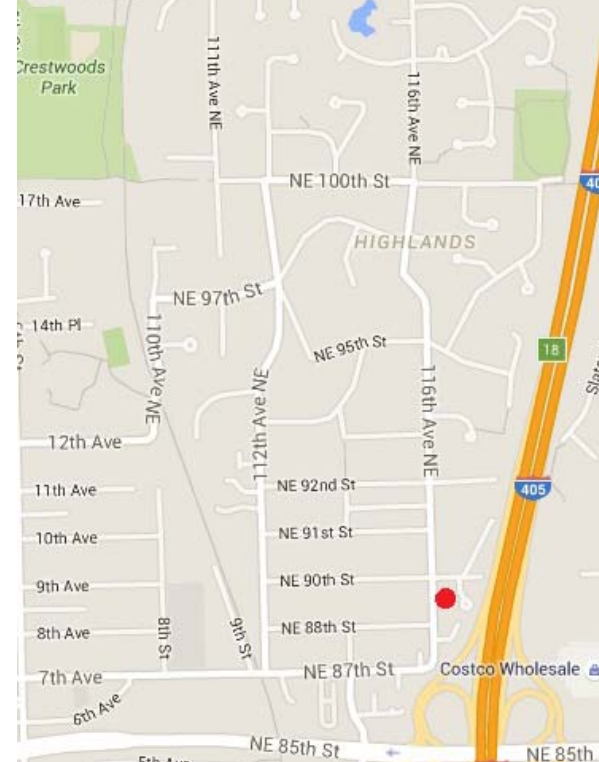
After Leitha's Store



1952



2016



8806 116th Ave NE
 Built 1920 Rumors of a brothel



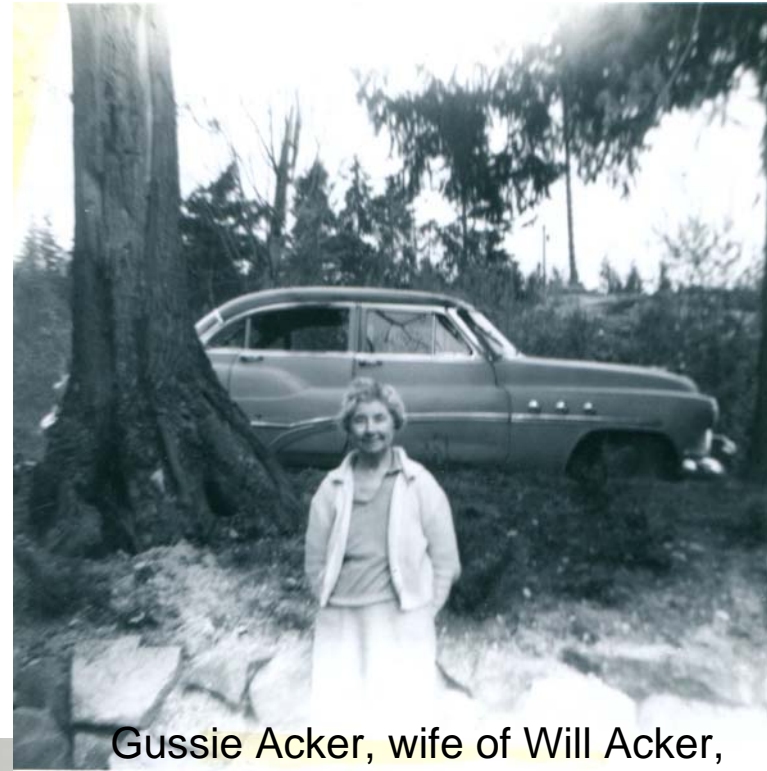


- Built 1919
- Acker's store 1925-1940
delivered milk in a wagon
- Church 1940-1945
- Grange Hall 1945-1971
meetings, dances, voting





House next to Grange Hall
Built 1911
Grocer Will Acker buys in 1925
Elwin A. Magill buys in 1971 (still in family)



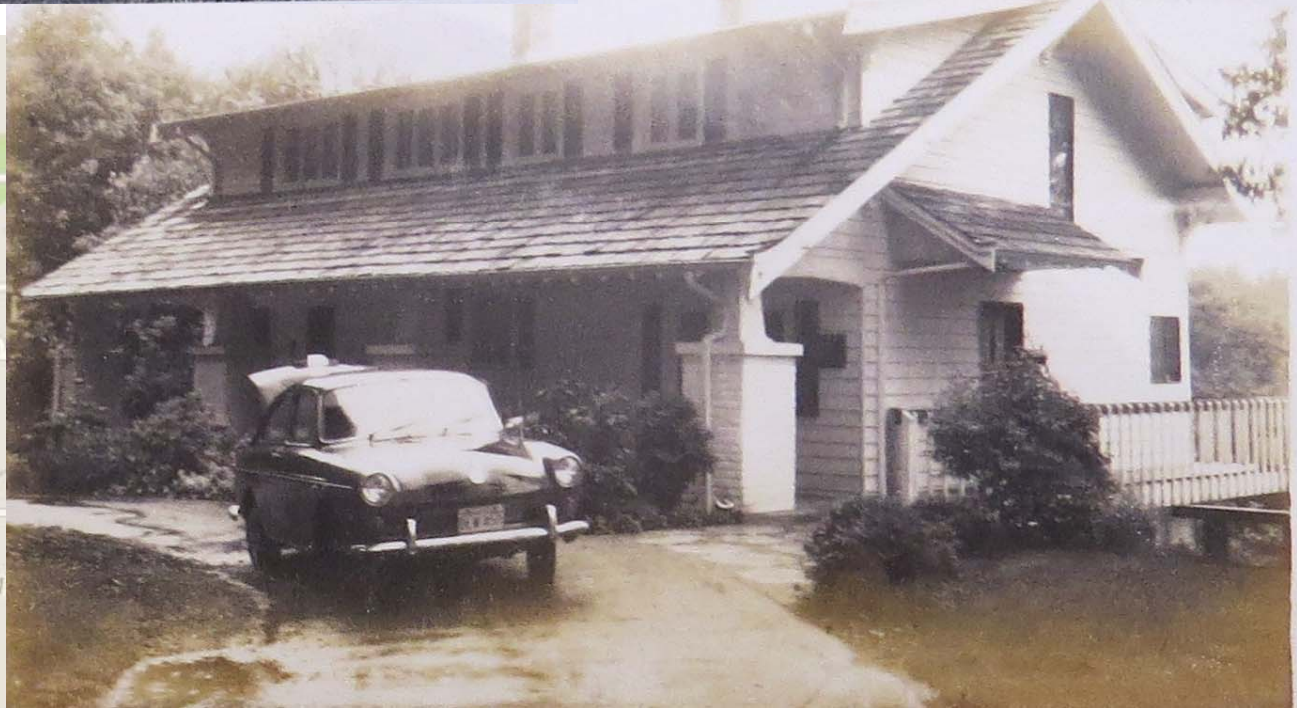
Gussie Acker, wife of Will Acker,
died 1976





"The White House" on 111th
Alida S. Larson purchased
property in 1918, built house
in 1919

Larson donated land for
Highlands Park





• AUG

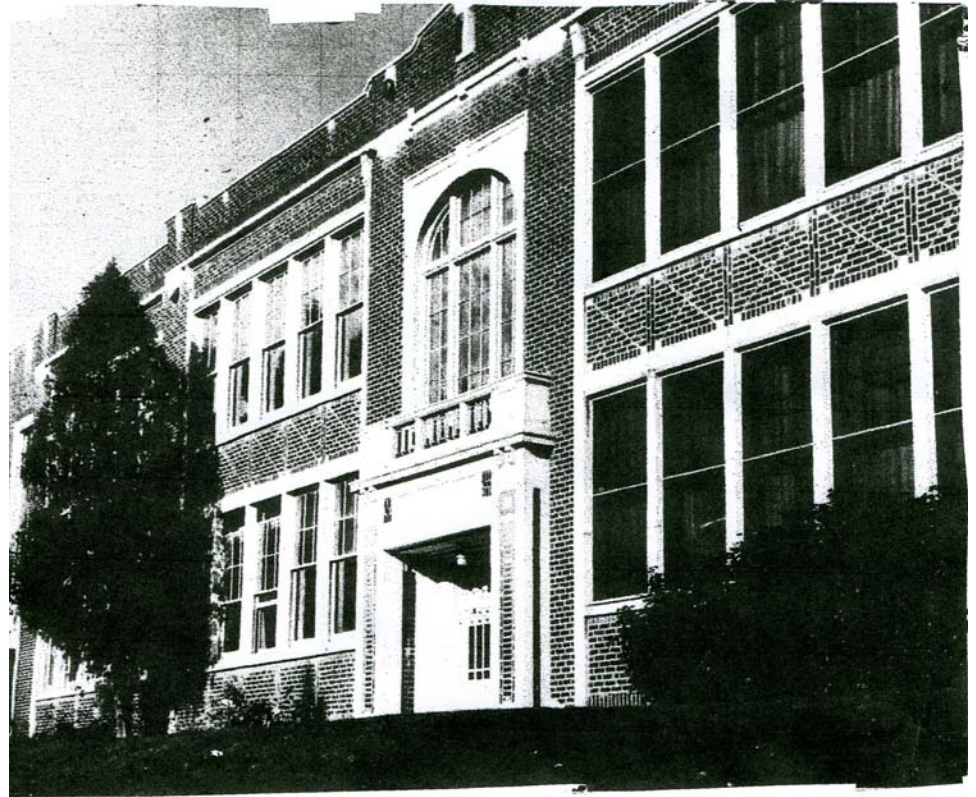
71



The White House today

Stephanie Smith and Karyn McFarland
at the house in 1971
Owned by McFarlands
Used to race trains with horses

Downtown Kirkland
(current site of Sur la Table)



KIRKLAND JUNIOR HIGH

VISTA VUES 1973

Highlands Park Water tower

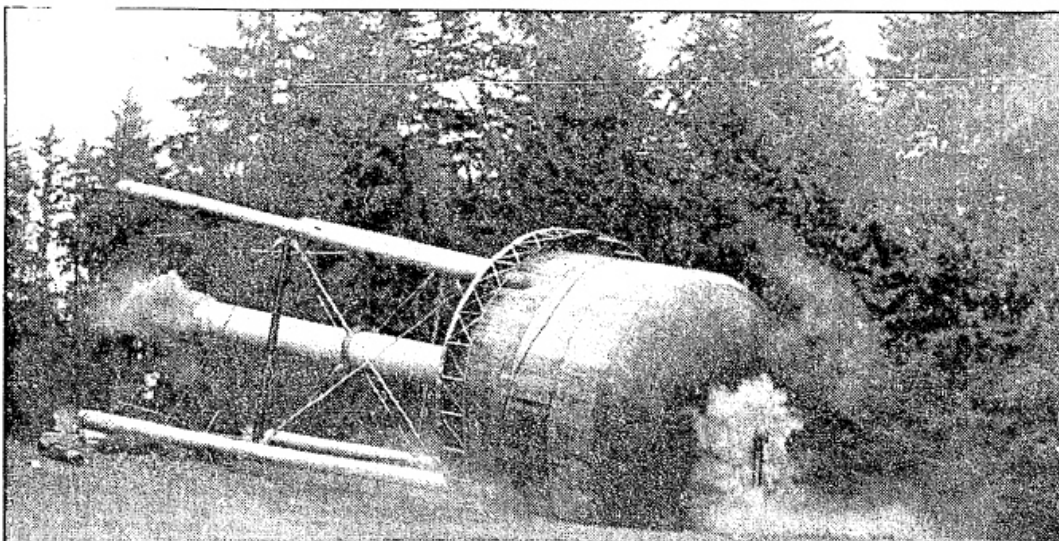
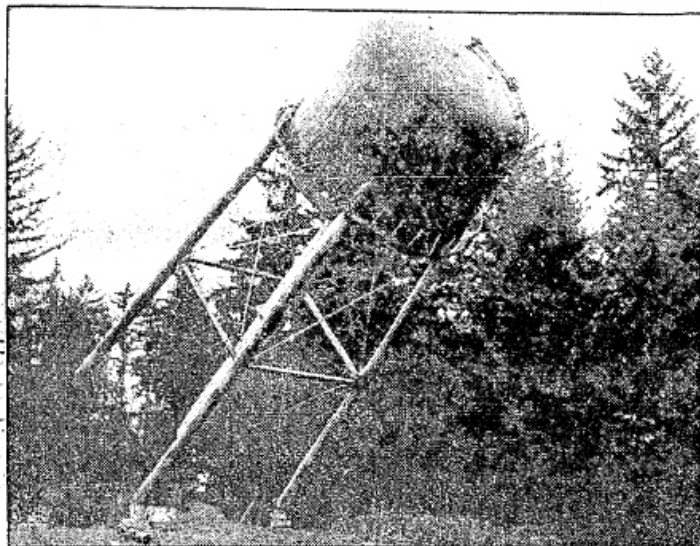
Park land
donated by
Mr. Larson

Tower installed or
upgraded in 1953

Fed from wells on
site and at NE
92nd and 112th
Ave NE

Taken out of
commission in
mid-60's



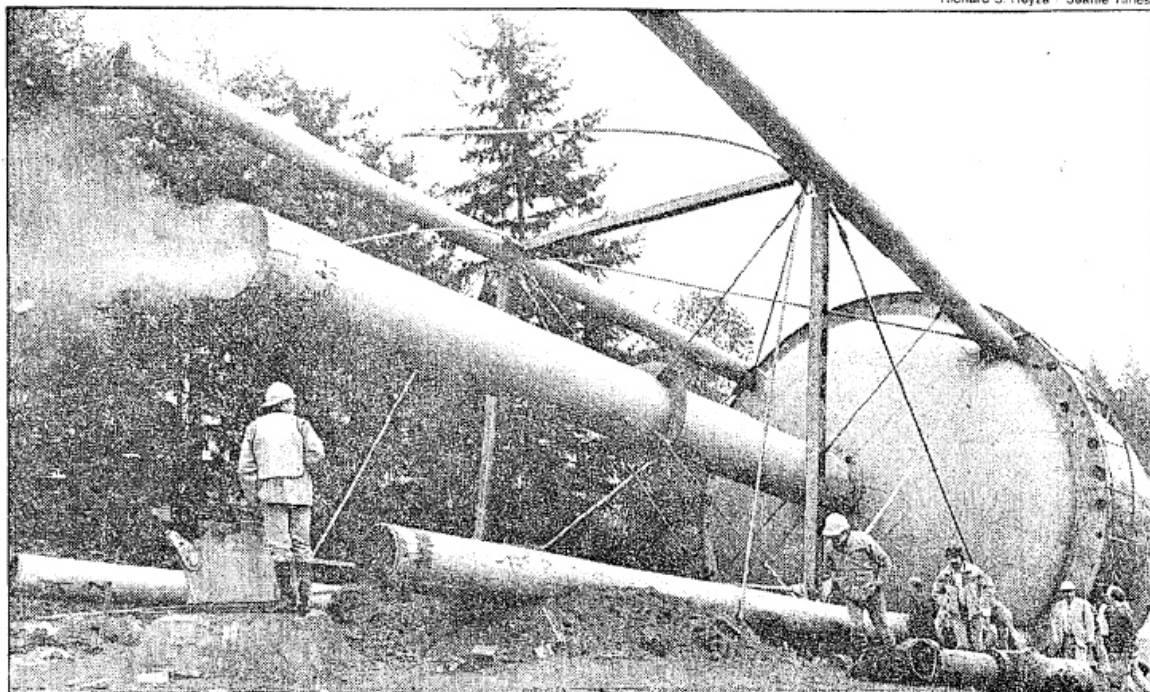


Richard S. Heyza / Seattle Times

There she goes ... rusty tower hits dust

An old water tower in the Highlands area of Kirkland came down in a cloud of dust — actually, it was rust — last week. The tower, situated at 112th Avenue Northeast and Northeast 103rd Street, had to come down, said Kirkland's Public Works Director Larry Larse, because kids had been riding their bicycles on the upper catwalk and even around the inside of the bowl. The tower, unused for several decades, was also an eyesore, Larse said. Sunset Demolition was hired to cut the steel legs of the tower and pull it over with a tractor.

Water tower taken
down 1984



Other History Highlights

- Highlands annexed to Kirkland in pieces between 1947 and 1967
- From 1964 to 1968, Lee Johnson Chevrolet was located in the Highlands, at the location of the current NE 85th Street offramp
- Ray Cotton owned most of the hill above Peter Kirk Elementary and built “Cotton Hill” road (NE 97th Street). Cotton Hill Park is named for Ray.

Interstate 405

- Originally called Secondary State Highway 2A (SSH 2A); dates from at least 1927; ran from Renton to Kirkland and Bothell, connecting back to US 99 in Everett
- Improved and widened in stages during late 1950s and 1960s
- In 1964, SSH 2A was relabeled SR 405
- Before 405, Highlands was part of Rose Hill
- Around 1971, SR 405 was relabeled Interstate 405 after it was upgraded to Interstate Highway standards
- There were only three Kirkland crossing points: NE 116th Street, NE 68th Street, and NE 85th Street (SR 908)
- No sound wall as of 1980

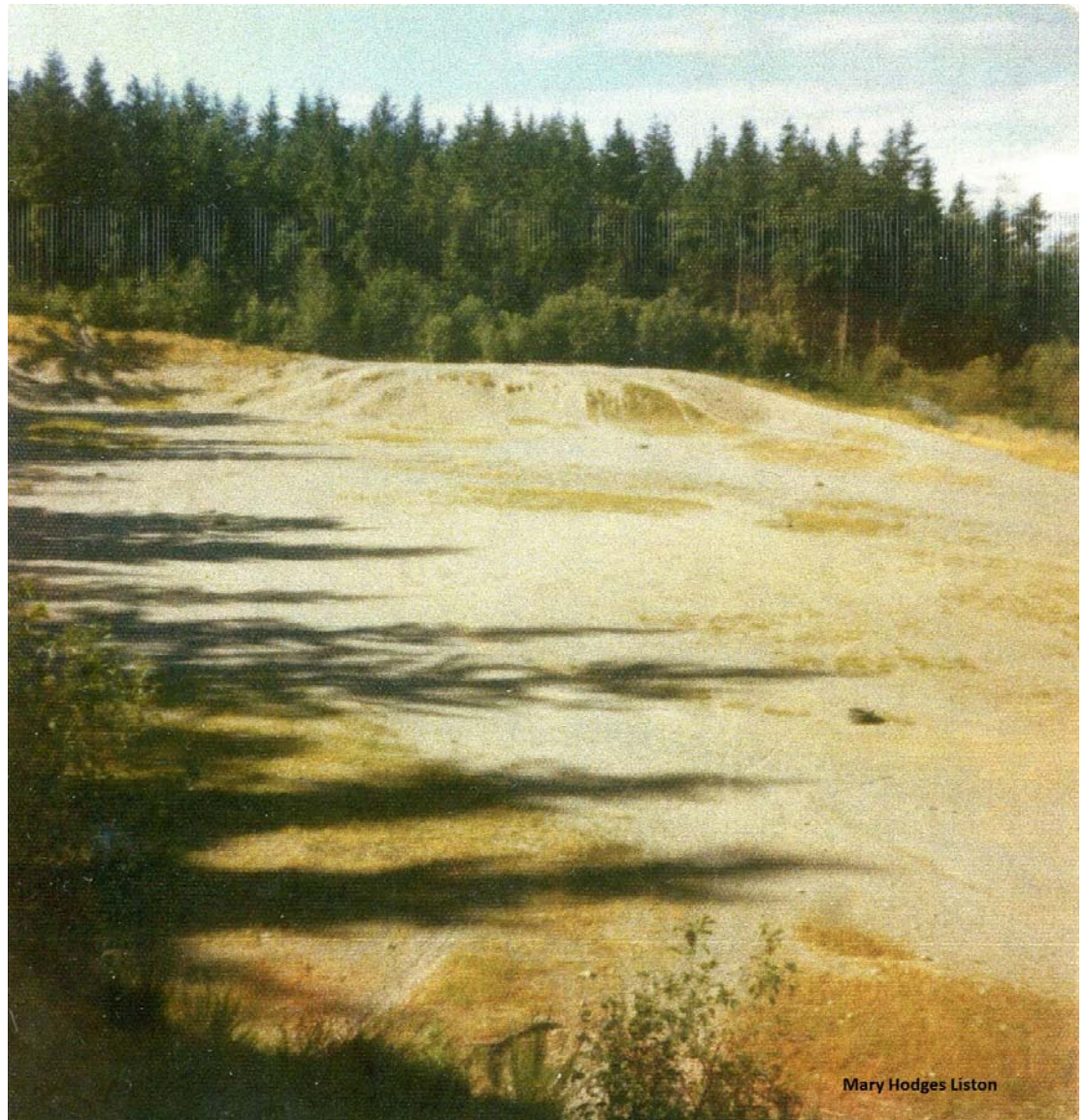
Changing Infrastructure

- During the 1960s and the 1970s, the neighborhood was filling in with single family houses on large lots.
- Roads were improved, water was supplied, and, after much debate, angst, and consternation, a sewer system was connecting up.
- Utilities were installed along 116th, and high-voltage lines were strung across 405 on 90th, down 116th, and then down 87th to the substation.

Spinney Homestead Park

Sand and
gravel pit for
405 construction

Land was part of
Spinney family
homestead



Mary Hodges Liston

Highlanders take a farewell ride on the Dinner Train, 2007



Hae Sue Park/Courtesy photo
Pete Ada, Hae Sue Park, and their children joined a group of
Highlands neighbors for a dinner train farewell ride on May 20.

Famous Highlands Residents

- Nancy Wilson of Heart



- Joe Steele of the Huskies
- Assorted Seahawks such as David Hughes and David Wyman
- Skye Skjelset of the band Fleet Foxes. (They rehearsed in basement of Skjelset home. “You could hear the music nightly all up and down Cotton Hill.”)

Seahawks House

~2011-2017

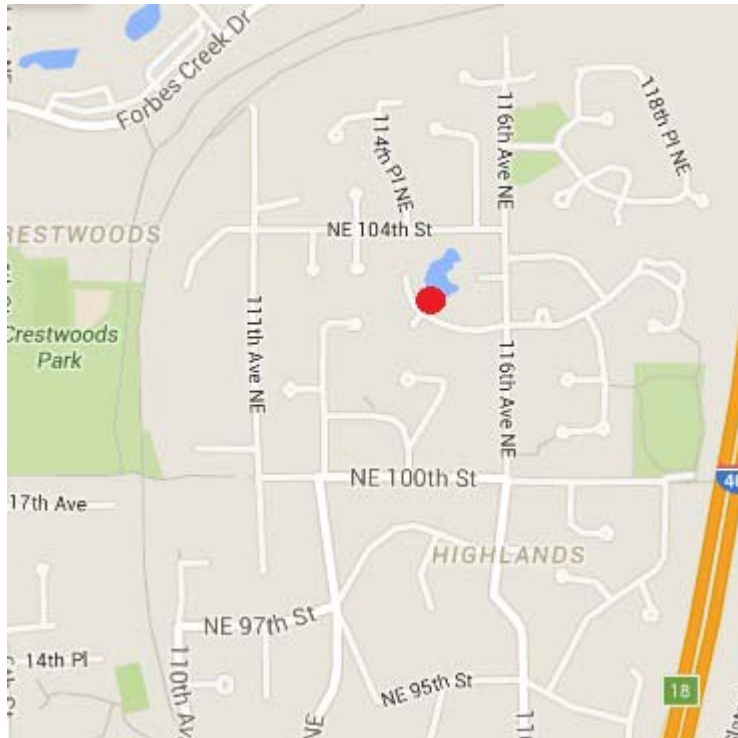


<https://www.seattletimes.com/seattle-news/eastside/hawk-house-goes-dark-seahawks-themed-christmas-light-show-too-much-for-quiet-kirkland-neighborhood/>

“The Original Funky House” aka “The Heart House”

Built 1974 by George Reynoldson
Space Time Homes company
(solar principles, salvaged materials)

Owned by Nancy Wilson
of band Heart until 1984



“Extreme Home Makeover” TV Show in the Highlands 2007

